



# TFMS - Segment Forecast Report

Username	Email	Script Import Date	Script Version	Model Version
Tfoster	Thomas.Foster@dot.ohio.gov	4/14/2020 5:30:19 PM	2020.001	2024.1900

## Forecast Summary

Project ID	Project Name	Opening Year	Design Year
105490	GUE IR 77 5.16 L/R	2026	2046

### Project Description

Bridge rehabilitation on Gue-IR 77-5.16 L/R. Pier patching on Gue-IR 77-5.99

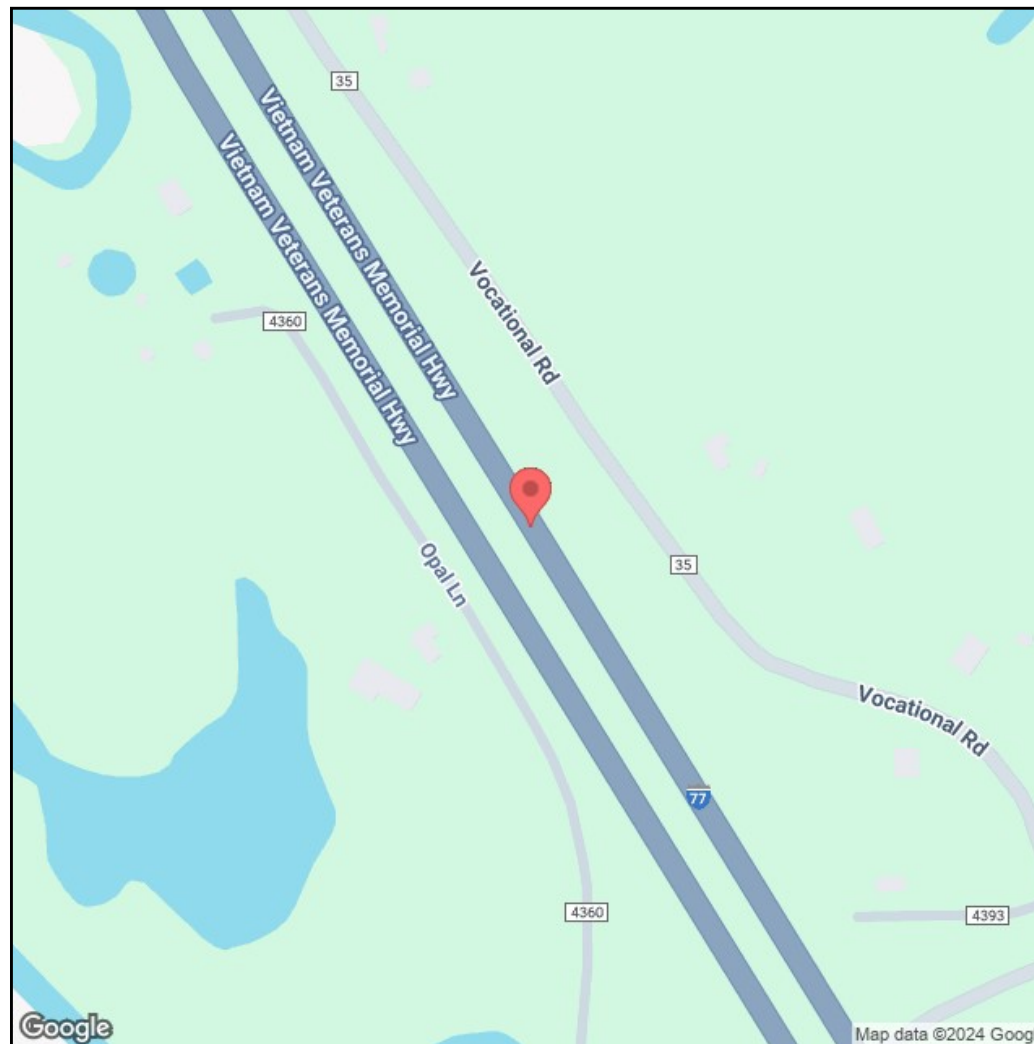
\*Users of this data need to be aware that there are limitations to the forecasts generated by this product that make it suitable only for roadway design projects which are low risk.

## Segment Information

Segment ID	LRS ID	BMP	EMP	Length	Latitude	Longitude
1928029	SGUEIR00077**C	5.278	7.161	1.883	-81.5424830454138	39.9820703541614

## Forecast Information

Segment ID	2026 AADT	2046 AADT	DHV-30	K%	D%	T24%	TD%
1928029	22,500	24,500	3,200	12.9	55.0	20	11



### Definitions:

- o AADT – Annual Average Daily Traffic
- o DHV30 – Design Hour Volume for 30th highest hour of the year
- o  $DHV30 = K * AADT$
- o K % – Design Hour Factor
- o D % – Peak Direction Factor
- o T24 % – Percent Daily Trucks
- o TD % – Percent Design Hour Trucks

Forecast Segment ID	Route	BMP	EMP
1928029	SGUEIR00077**C	5.278	7.161

## Forecast

Year	K%	T24 % (Existing)	PA AADT	PA Method	PA Growth Rate %	PA Calculated Rate %
2050	◆ 12.9	19	20,000	Model	0.400	0.400
AADT	D%	TD % (Existing)	BC AADT	BC Method	BC Growth Rate %	BC Calculated Rate %
25,000	◆ 55.0	11	5,000	Average	0.600	0.600

◆ K/D factors from TCDS were used.

## Regression

Method Number	PA AADT	BC AADT	AADT
2	19,623	3,178	22,801

95% Confidence Min/Max

PA Min	PA Max	BC Min	BC Max	Year
7648	32166	-3850	7028	2050

Method Number	PA Growth %	BC Growth %	PA Drop Count	BC Drop Count	PA AADT	BC AADT	PA Adjustment	PA Adjustment
1	0.03	-0.75	0	0	17,029	3,737	18,127	3,434
2	0.34	-0.97	5	4	19,264	3,245	19,623	3,178
3	0.58	-1.65	0	0	20,122	2,533	20,821	2,385
4	0.97	-1.65	5	4	22,846	2,349	22,706	2,385
5	0.47	-2.95	0	0	19,528	850	20,286	871
6	0.86	-2.33	5	4	22,252	1,498	22,172	1,600

Adjustment Info

ID	Adjustment Methods Name	Model vs Count AADT	Adjusted AADT	Model vs Count BC	Adjusted BC	PA Growth Rate %	BC Growth Rate %
1	DIF	-9,606	27,558	-1,949	7,028	0.52	2.35
2	RAT	0.70	25,974	0.69	6,179	0.37	1.61
3	MRAT	1.16	26,198	1.44	6,437	0.36	1.84
4	RAF		26,878		6,732	0.44	2.09
Adjust Method AADT		Adjust Method BC		Selected PA Growth Rate %		Selected BC Growth Rate %	
Average		Average		0.400		2.100	

Method 1 - 4 Volume

PA Min Volume	PA Max Volume	BC Min Volume	BC Max Volume	Total Min Volume	Total MaxVolume
19761	20530	6179	7028	25940	27558

Process Flag:

Adjusted model to counts with process per ODOT 255 spreadsheet

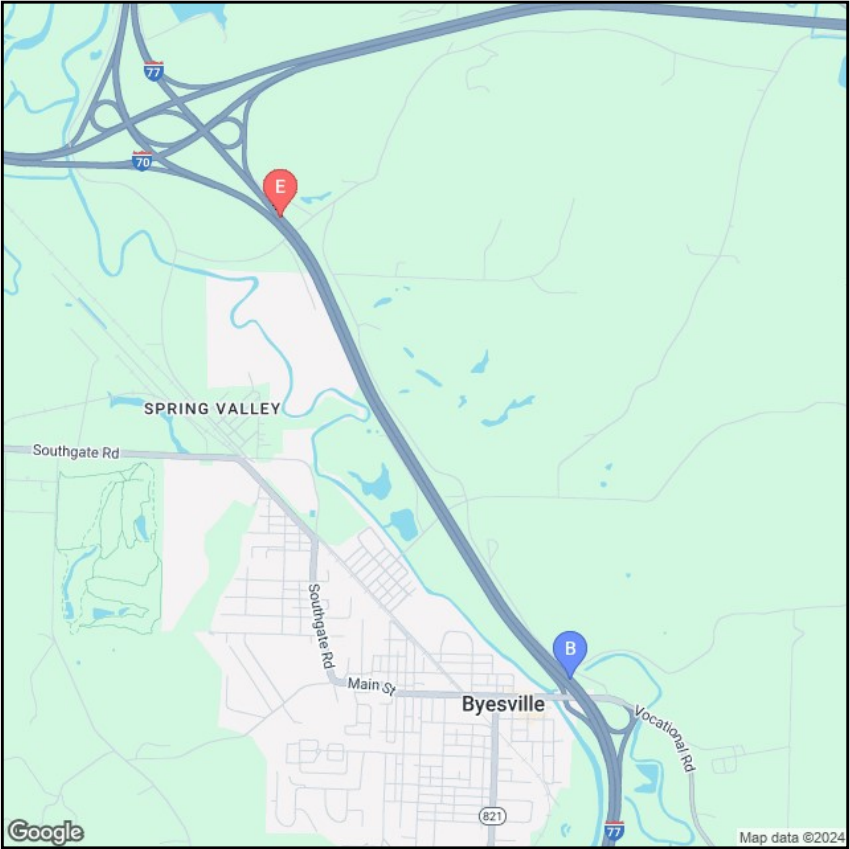
Comment:

No Comment

Historical Count

Year	All	Cars	Trucks
2008	22,520	17,820	4,700
2011	20,886	15,920	4,966
2014	21,674	16,521	5,153
2017	22,998	17,386	5,612
2020	19,863	15,514	4,349
* 2023	22,297	17,994	4,303

\* Pivot Point



Segment ID	LRS ID	BMP	EMP	Length	Yr 2026 AADT	Yr 2046 AADT	DHV30	K %	D %	T24 %	TD %
1928029	SGUEIR00077**C	5.278	7.161	1.883	22,500	24,500	3200	12.9	55.0	20	11